

# GLASS DOOR BACK BAR COOLER

**EBB – Series Model : EBB90G**



 **Operating temperature range is 32°F ~ 42°F**



## Cabinet Construction

Heavy duty stainless steel countertop, textured and laminated black vinyl exterior. Galvanized steel interior wall, and high quality stainless steel floor. 1 3/4" thick high density foamed-in-place polyurethane insulation. Built-in caster thread receptacles.

## Refrigeration System

- side mounted condensing unit
- Oversized condenser and evaporator coils quickly achieve and maintain desired temperature
- Forced-air cooling with oversized evaporator fan motors providing balanced airflow throughout cabinet to ensure faster temperature drop
- Removable side panel and slide-out condensing unit for convenient repair and maintenance
- Environmentally friendly CFC free R-134A refrigerant
- Air defrost controlled by electrical timer
- Copper tube and aluminum fin evaporator with anti-corrosive coating
- Energy efficient condensate drain pan assembly heated by high side copper tube
- Pre-wired and ready to plug, 115V/60Hz/1Ph, NEMA 5-15P

## Doors

- Black PVC door frames
- Low emissivity double pane glass system reflects UV rays and improves insulation for maximized energy efficiency
- One piece snap-in magnetic door gaskets for easy replacement
- Heavy duty die cast door handles
- Door locks

## Lighting

- Shielded vertical LED interior lighting with on/off switch for energy saving, less heat generation and enhanced illumination (available from 2015 models)

## Shelving

- Two epoxy coated wire shelves per section
- Stainless steel pilasters and shelf clips

## Temperature Control

- Factory preset temperature, 35°F
- Temperature setting range from 32°F to 42°F
- Easy to set analog thermostat

## Option

- 2 1/2" and 4" diameter casters (3 1/2" and 5" overall height)

Model	# of Doors	Capacity (Cu. Ft.)	HP	Refrigerant	# of Shelves	Capacity 20 oz. Cans / Bottles	Power (V-Hz-Ph)	Amps	Crated Weight	Exterior Dimensions		
										L	D†	H
EBB90G	3	32.37	1/3	R-134A	6	1120 / 696	115-60-1	4.50	484 lbs (219.5 kg)	89 1/4" (2268 mm)	27" (685 mm)	37 1/4" (946 mm)

† : Depth does not include protruding door handles

Specifications subject to change without notice.

Product dimensions are for general purposes and not absolute value. Product capacity(▶) is calculated based on standard industry figures. Slight variations may exist. If dimensions and capacity are critical, please contact Everest Refrigeration.

# GLASS DOOR BACK BAR COOLER

**EBB – Series Model : EBB90G**



DIMENSIONAL DATA		
Net capacity cu. ft.		32.37 (916.6 cu l)
<b>Exterior (mm)</b>	Length Overall in.	89 1/4" (2268)
	Depth Overall in. <sup>†</sup>	27" (685)
	Height Overall in.	37 1/4" (946)
Crated Weight		484lbs (219.5kg)
# of Doors		3
# of Shelves		6
Capacity 20oz. (Cans / Bottles)		1120 / 696
Shelf Size Length x Depth in. (mm)	25" x 20 7/8" (635 x 530)	
	23" x 20 7/8" (584 x 530)	
	26 15/16" x 20 7/8" (684 x 530)	
ELECTRICAL DATA		
Voltage (V-Hz-Ph)		115-60-1
Full load amperes		4.50
Feed wires with Ground		3
Cord Length ft.		9
REFRIGERATION DATA		
Refrigerant		R-134A
Compressor H.P.		1/3 HP
BTU/HR <sup>a</sup> (Kcal/h)		2555 (644)



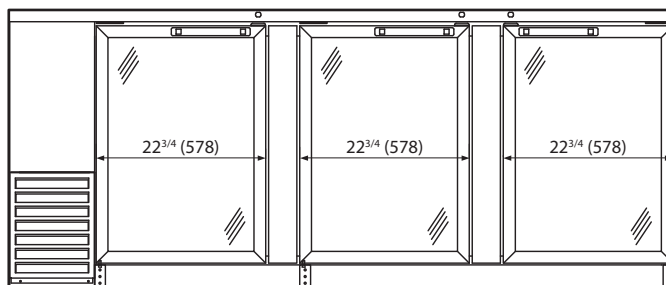
Equipped with one NEMA 5-15P plug.

**Specifications subject to change without notice.**

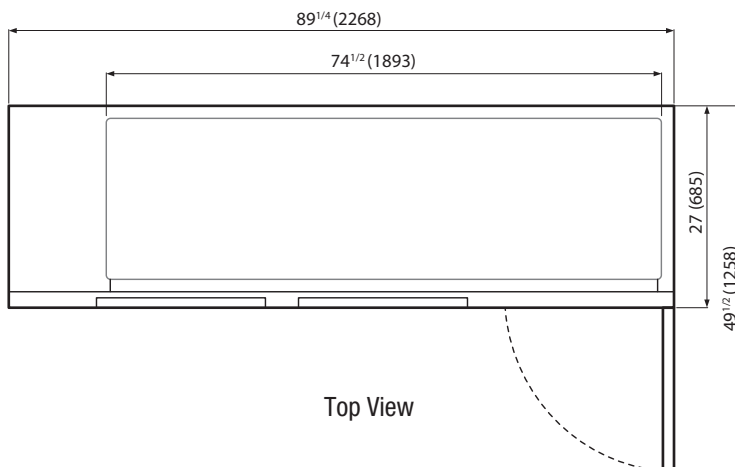
<sup>†</sup>: Depth does not include protruding door handles.

<sup>a</sup>: Based on evaporating temperature of 23°F(-5°C) & Condensing temperature of 131°F(55°C).

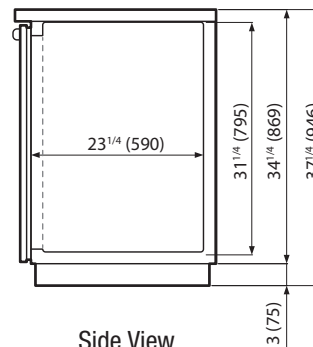
## Dimensions inches (mm)



Front View



Top View



Side View