

GLASS DOOR BACK BAR COOLER

EBB – Series Model : EBB69G



 **Operating temperature range is 32°F ~ 42°F**



Cabinet Construction

Heavy duty stainless steel countertop, textured and laminated black vinyl exterior. Galvanized steel interior wall, and high quality stainless steel floor. 1 3/4" thick high density foamed-in-place polyurethane insulation. Built-in caster thread receptacles.

Refrigeration System

- Side mounted condensing unit
- Oversized condenser and evaporator coils quickly achieve and maintain desired temperature
- Forced-air cooling with oversized evaporator fan motors providing balanced airflow throughout cabinet to ensure faster temperature drop
- Removable side panel and slide-out condensing unit for convenient repair and maintenance
- Environmentally friendly CFC free R-134A refrigerant
- Air defrost controlled by electrical timer
- Copper tube and aluminum fin evaporator with anti-corrosive coating
- Energy efficient condensate drain pan assembly heated by high side copper tube
- Pre-wired and ready to plug, 115V/60Hz/1Ph, NEMA 5-15P

Doors

- Black PVC door frames
- Low emissivity double pane glass system reflects UV rays and improves insulation for maximized energy efficiency
- One piece snap-in magnetic door gaskets for easy replacement
- Heavy duty die cast door handles
- Door locks

Lighting

- Shielded vertical LED interior lighting with on/off switch for energy saving, less heat generation and enhanced illumination (available from 2015 models)

Shelving

- Two epoxy coated wire shelves per section
- Stainless steel pilasters and shelf clips

Temperature Control

- Factory preset temperature, 35°F
- Temperature setting range from 32°F to 42°F
- Easy to set analog thermostat

Option

- 2 1/2" and 4" diameter casters (3 1/2" and 5" overall height)

Model	# of Doors	Capacity [†] (Cu. Ft.)	HP	Refrigerant	# of Shelves	Capacity 20 oz. Cans / Bottles	Power (V-Hz-Ph)	Amps	Crated Weight	Exterior Dimensions		
										L	D [†]	H
EBB69G	2	24.01	1/4+	R-134A	4	800 / 504	115-60-1	4.50	355 lbs (161 kg)	68" (1727 mm)	27" (685 mm)	37 1/4" (946 mm)

[†] : Depth does not include protruding door handles.


Specifications subject to change without notice.

Product dimensions are for general purposes and not absolute value. Product capacity(†) is calculated based on standard industry figures. Slight variations may exist. If dimensions and capacity are critical, please contact Everest Refrigeration.

GLASS DOOR BACK BAR COOLER

EBB – Series Model : EBB69G



DIMENSIONAL DATA		
Net capacity cu. ft.		24.01 (679.9 cu l)
Exterior (mm)	Length Overall in.	68" (1727)
	Depth Overall in.†	27" (685)
	Height Overall in.	37 1/4" (946)
Crated Weight		355 lbs (161kg)
# of Doors		2
# of Shelves		4
Capacity 20oz. (Cans / Bottles)		800 / 504
Shelf Size Length x Depth in. (mm)		27 15/16" x 20 7/8" (710 x 530) 23 5/8" x 20 7/8" (660 x 530)
ELECTRICAL DATA		
Voltage (V-Hz-Ph)		115-60-1
Full load amperes		4.50
Feed wires with Ground		3
Cord Length ft.		9
REFRIGERATION DATA		
Refrigerant		R-134A
Compressor H.P.		1/4+ HP
BTU/HR ^a (Kcal/h)		2075 (523)
<div><div></div><div>Equipped with one NEMA 5-15P plug.</div></div>		



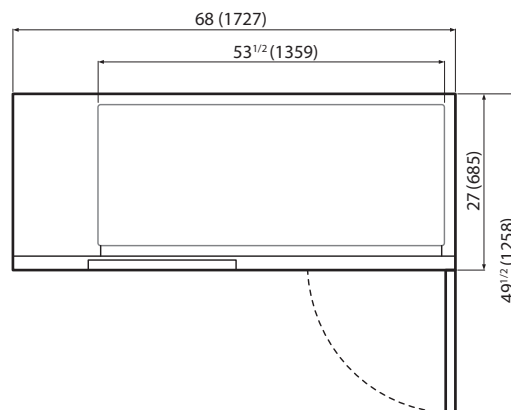
Equipped with one NEMA 5-15P plug.

Specifications subject to change without notice.

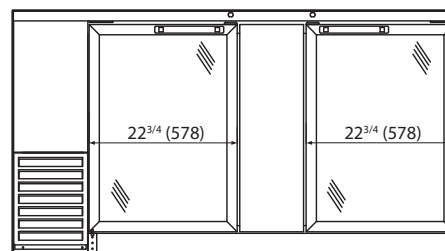
† : Depth does not include protruding door handles.

a : Based on evaporating temperature of 23°F(-5°C) & Condensing temperature of 131°F(55°C).

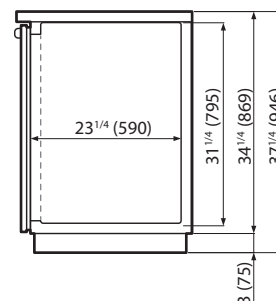
Dimensions inches (mm)



Top View



Front View



Side View