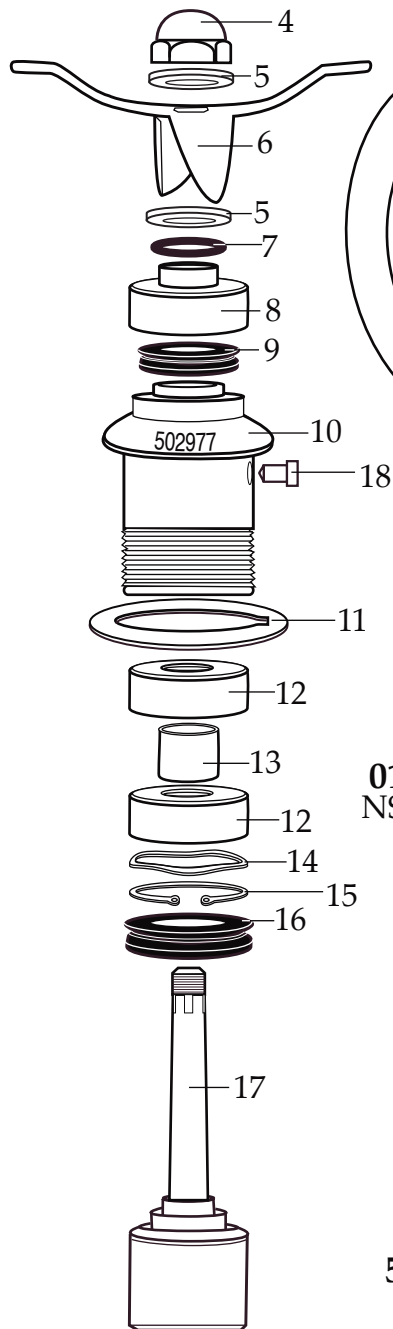


**CBL10**  
Hot Blending Lid  
(optional)



**502977**

(changed after 2/24/2006)  
Blending Assembly  
(replaces 502493 & 502975)

## Unit Information

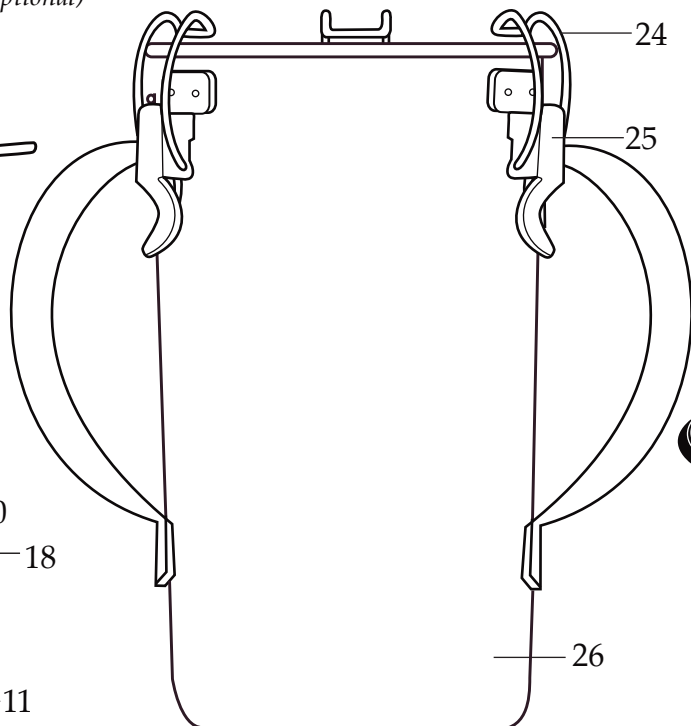
15.0 Amps. – 3.75 HP

3 Year Limited Motor Warranty

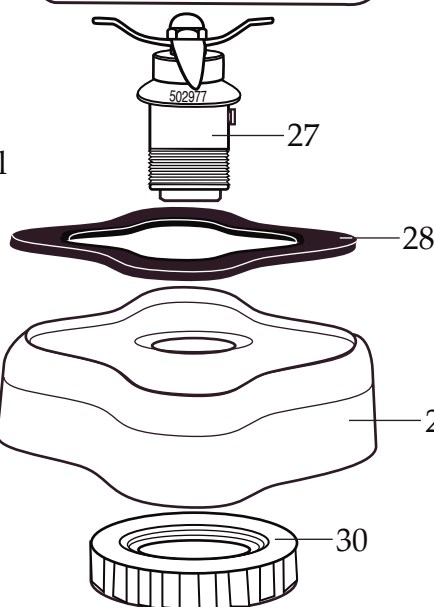
2 Year Limited Warranty

Electronic Membrane Keypad

Slow Start™ Blending Mechanism



**013304**  
NSF Seal



**502235** - Container with Blending Assembly

**704587** - Container Complete with Lid

**704350** - Container Complete with Stainless Steel Lid

**WARING**  
**COMMERCIAL**

One Gallon Blender

**CB15**

**CB15S**

CB15 with Hot Blending Lid

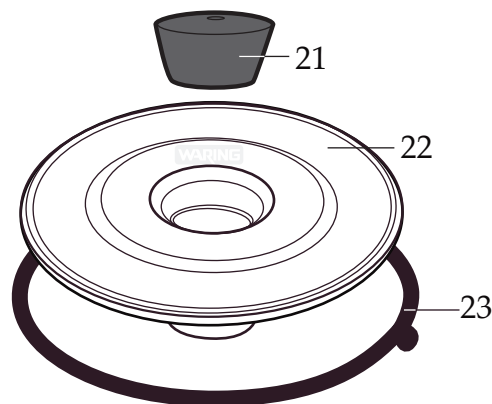
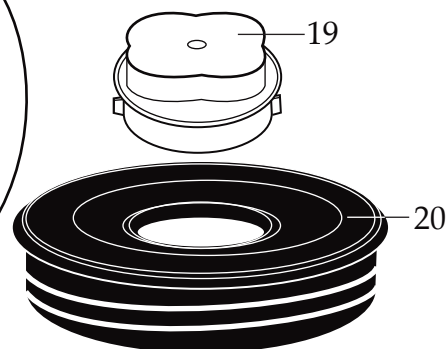
**Marked for Deletion**

**CB15DB** (on 8/28/2012)

CB15 with BB150DW

**CBC15** (on 4/1/2005)

Calico Label



**CB15-CB15DB-CB15S**  
(on units before 10/9/2006)

**502493**

Blending Assembly  
(on units before 9/24/2004)

Different From new Assembly  
(limited quantities available)

**018397** - Washer

**018388** - O Ring

**023903** - Bearing Cap



026626 Name Plate / Don



026639 Name Plate / Calico

# WARING COMMERCIAL®

Base Unit

## CB15

## CB15S

CB15 with Hot Blending Lid

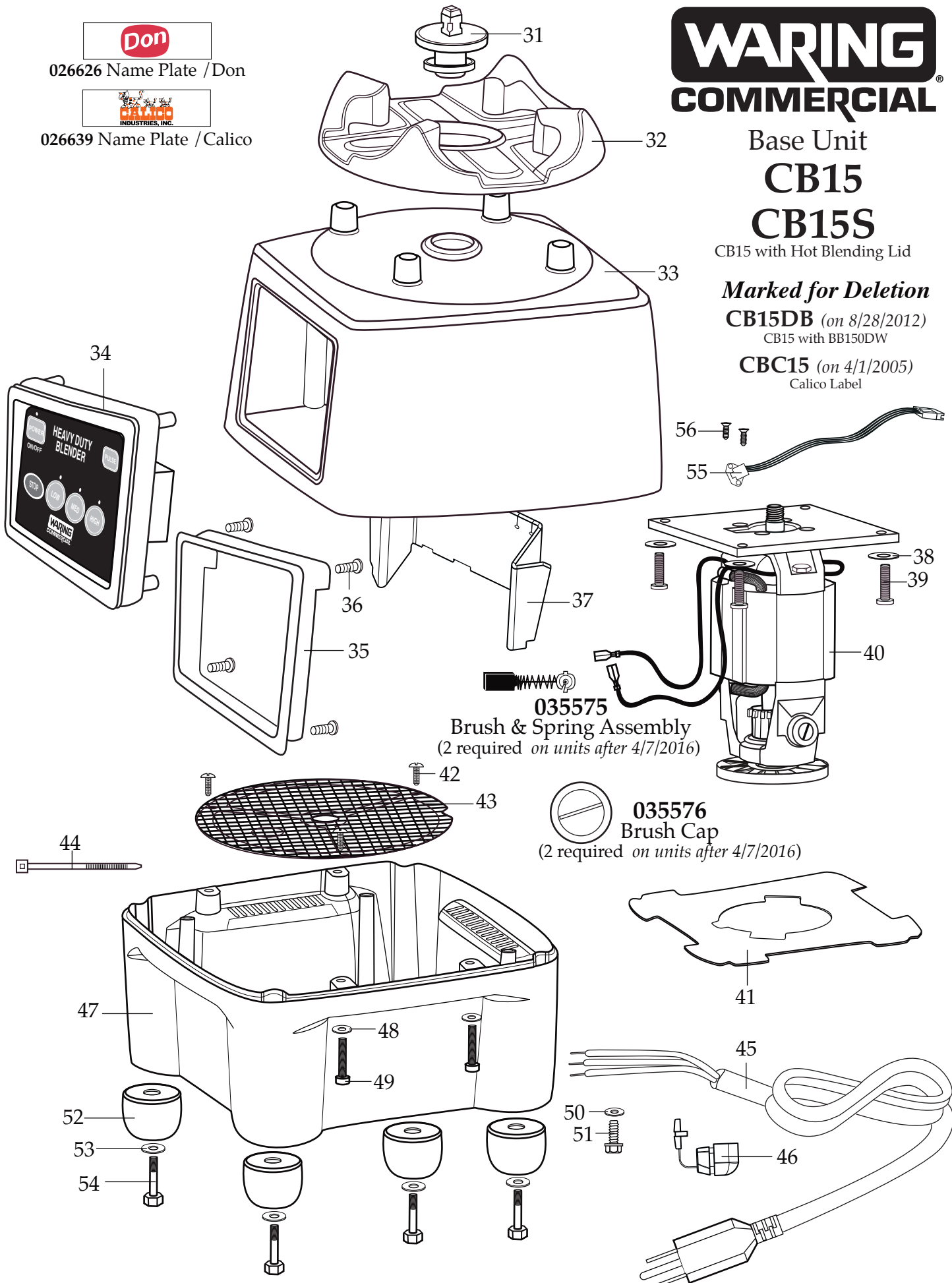
**Marked for Deletion**

**CB15DB** (on 8/28/2012)

CB15 with BB150DW

**CBC15** (on 4/1/2005)

Calico Label



**Catalog**

CB15	CB15G	CB15N	CB15
CB15S	<i>(on units after 4/7/2016)</i>	<i>(on units after 9/16/2013)</i>	CB15S
CB15DB	<i>(marked for deletion on 8/28/2012)</i>		CB15DB
CBC15	<i>(marked for deletion on 4/1/2005)</i>		CBC15



Illustration #	Part #	Description
1	024000	Hot Blending Outer Lid
2	026496	Hot Blending Outer Lid Gasket
3	023998	Hot Blending Baffle Cup
4	002972	Cap Nut
5	027581	Flat Washer
6	027683	Blade
7	018389	"O" Ring
8	027582	Bearing Cap
9	018390	Small "V" Ring
10	023934	Bearing Holder
11	004946	Washer
12	018386	Bearing
13	023926	Spacer
14	023907	Spring Washer
15	023927	Retaining Ring
16	023906	Large "V" Ring
17	023933	Drive Shaft
18	025817	Key <i>(changed after 6/18/2004)</i>
19	028530	Cover Insert <i>(on CB15, CB15S, CB15DB, CBC15 units after 9/27/2006)</i>
20	028226	Outer Lid <i>(on CB15, CB15S, CB15DB, CBC15 units after 9/27/2006)</i>
21	013470	Stopper <i>(used with 023999 plastic lid)</i>
22	023999	Plastic Outer Lid <i>(obsolete)</i>
23	026496	Plastic Lid Gasket <i>(on units before 10/9/2006)</i>
24	008791	Latch Wire <i>(3 required)</i>
25	502773	Bracket Assembly-spot welded to container <i>(3 required)</i>
26	023909	Double Handle Container
27	502977	Complete Blending Assembly <i>(changed after 2/24/2006)</i>
28	004949	Container Support Gasket
29	025571	Container Support <i>(container base changed after 8/12/2002)</i>
30	012008	Lock Nut
31	503328 502696	Coupling with Magnet Ring <i>(on units after 8/20/2013)</i> Coupling
32	025871	Jar Pad
33	028025	Top Housing <i>(changed 10/25/2010)</i>

**Catalog**CB15  
CB15SCB15G  
(on units after 4/7/2016)**Model**

CB15N

(on units after 9/16/2013)

CB15  
CB15SCB15DB  
CBC15(marked for deletion on 8/28/2012)  
(marked for deletion on 4/1/2005)CB15DB  
CBC15

**Waring Factory Service Center**  
**314 Ella T. Grasso Ave.**  
**Torrington, CT 06790**  
**Tele. 1-800-269-6640**

**Fax 860-496-9017**  
**www.waringcommercialproducts.com**

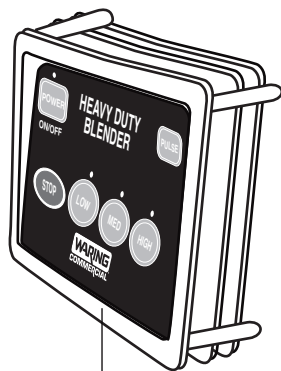
<b>Illustration #</b>	<b>Part #</b>	<b>Description</b>
34	030893 026400	Control Panel (on units after 8/20/2013) Control Panel
35	029888	Rear Control Panel (on units after 8/20/2013)
36	026497	Screw (4 required)
37	030453	Control Panel Baffle (on units after 8/20/2013)
38	003344 002984	Washer (4 required on units after 4/7/2016) Washer (4 required on units after 3/12/2003) (8 required for use with 015434)
39	019098 016691 015434 015434	Screw (4 required on units after 4/7/2016) Screw (4 required on units after 3/12/2003) Screw (4 required holds mounting plate to motor) Screw (4 required holds mounting plate & motor to top housing)
40	503472 029875 503323 026170 018788	Motor Modified CB15 Groschopp (on units after 4/7/2016) ECM Motor with MTP (on units after 9/27/2013) Motor with Sensor (on units after 8/20/2013) ECM Motor (on units after 3/13/2003) Motor (no longer available)
41	035355 026318	Baffle (on units after 4/7/2016) Baffle
42	026500	Screw (6 required)
43	018791	Screen
44	013731	Cable Tie (on units after 9/10/2013) (5 required)
45	503329 502855 501956	Cord Set (on units after 8/20/2013) Cord Set (on units after 1/17/2003) Cord Set
46	018811	Strain Relief
47	026317	Bottom Housing
48	002984	Washer (4 required)
49	026412	Screw (4 required)
50	002943 014798	Ground Washer (on units after 10/12/2009) Washer
51	027278 016317	Ground Screw (on units after 10/12/2009) Screw
52	026296	Foot (4 required)
53	018314	Washer (4 required)
54	026493	Screw (4 required)
55	030187	Hall Effect Sensor (on units after 8/20/2013)
56	030405	Screw (2 required on units after 8/20/2013)

## Catalog

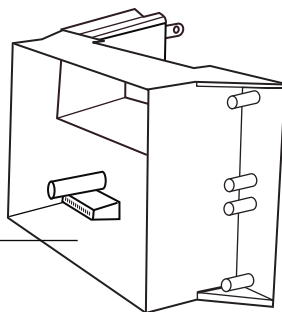
CB15	CB15G	CB15N	CB15
CB15S	(on units after 4/7/2016)	(on units after 9/16/2013)	CB15S
CB15DB	(marked for deletion on 8/28/2012)		CB15DB
CBC15	(marked for deletion on 4/1/2005)		CBC15

**Waring Factory Service Center**  
**314 Ella T. Grasso Ave.**  
**Torrington, CT 06790**  
**Tele. 1-800-269-6640**  
**Fax 860-496-9017**  
**www.waringcommercialproducts.com**

## Parts No Longer Used



**026400**  
Control Module Panel  
(on units before 9/3/2013)



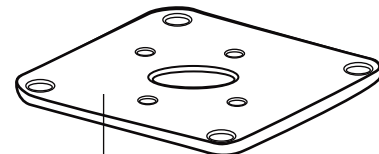
**019123**  
Crimp Connector  
(on units between 3/14/2003 thru 8/20/2013)



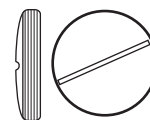
**502853**  
Lead & Fuse Assembly  
(on units between 3/14/2003 thru 8/20/2013)



**027381**  
Brush & Spring Assembly  
(2 required on units before 4/14/2016)

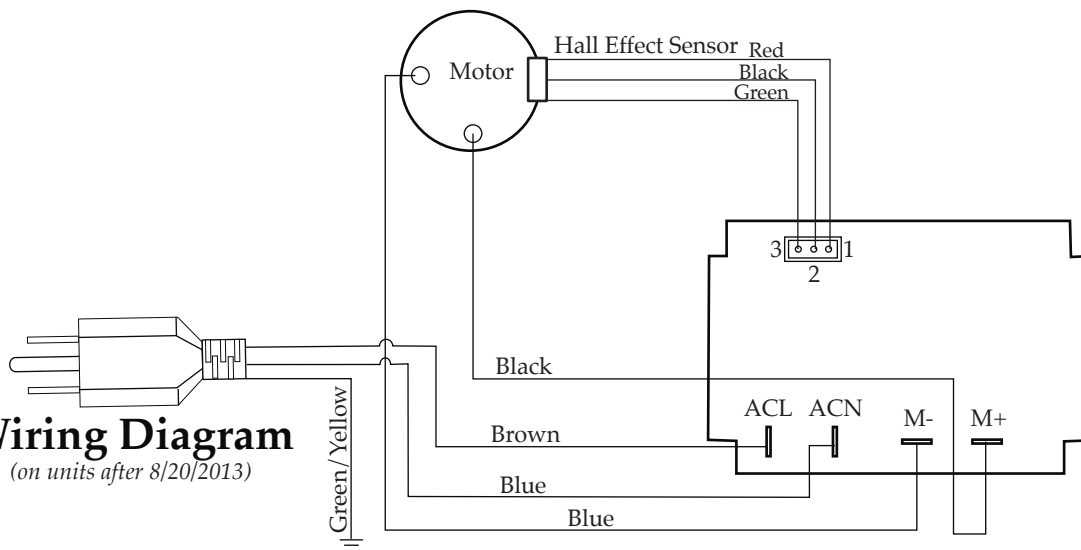


**018787**  
Motor Plate  
(on units before 3/13/2003)



**033485**  
Brush Cap  
(2 required on units before 4/14/2016)

## Wiring Diagram



## Wiring Diagram

