

BACK BAR COOLERS

EBB – Series • EBB23 • EBB48 • EBB59 • EBB69 • EBB90



▲ EBB23



▲ EBB48



▲ EBB59



▲ EBB69



▲ EBB90

Cabinet Construction

Heavy duty stainless steel countertop, with textured and laminated black vinyl exterior. Galvanized steel interior wall, and high quality stainless steel floor. 1 3/4" thick high density foamed-in-place polyurethane insulation. Pre-installed four 4" diameter casters for single door unit. Built-in caster thread receptacles for all units.

Refrigeration System

- Back mounted condensing unit for single door, and side mounted condensing unit for two and three door models
- Oversized condenser and evaporator coils quickly achieve and maintain desired temperature
- Forced-air cooling with oversized evaporator fan motors provide balanced airflow throughout cabinet to ensure faster temperature drop
- Removable side panel and slide-out condensing unit for convenient repair and maintenance
- Environmentally friendly CFC free R-134A refrigerant
- Air defrost controlled by electrical timer
- Copper tube and aluminum fin evaporator with anti-corrosive coating
- Energy efficient condensate drain pan assembly heated by high side copper tube
- Pre-wired and ready to plug, 115V/60Hz/1Ph, NEMA 5-15P

Lighting

- Shielded vertical LED interior lighting with on/off switch for energy efficiency, minimal heat generation and enhanced illumination (not applicable to EBB23 models manufactured prior to 2017)

Doors

- Textured and laminated black exterior with galvanized steel interior
- 1 3/4" thick high density foamed-in-place polyurethane insulation
- One piece snap-in magnetic door gaskets for easy replacement
- Heavy duty recessed door handles for a flat surface
- Door locks

Shelving

- Two epoxy coated wire shelves per section
- Stainless steel pilasters and shelf clips

Temperature Control

- Factory preset temperature, 35°F
- Temperature setting range from 32°F to 42°F
- Easy to set analog thermostat

Option

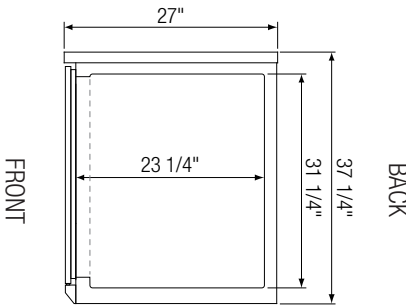
- 2 1/2" and 4" diameter casters (3 1/2" and 5" overall height) optional for all models except EBB23



5 YEAR Compressor
3 YEAR Parts & Labor

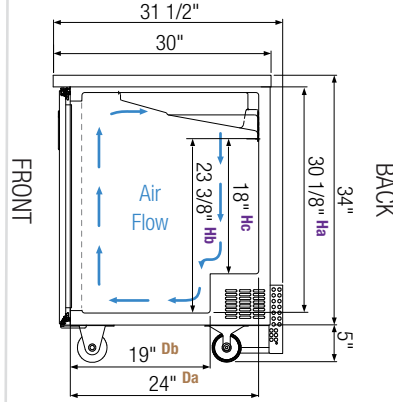
Dimensions

Side View (all models except EBB23)

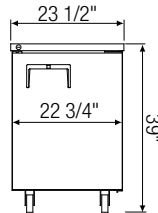
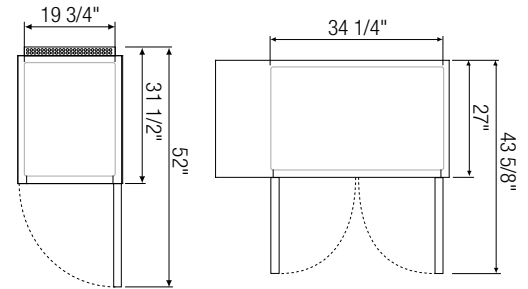


Equipped with 9 ft long
NEMA 5-15P plug.

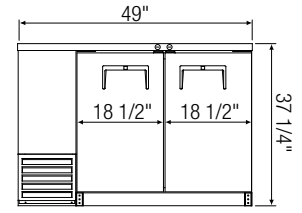
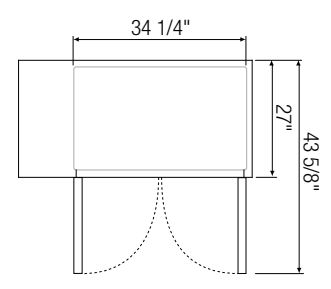
Side View (EBB23)



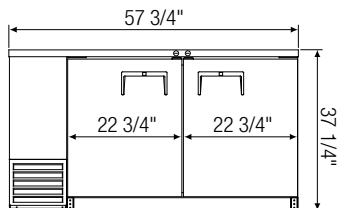
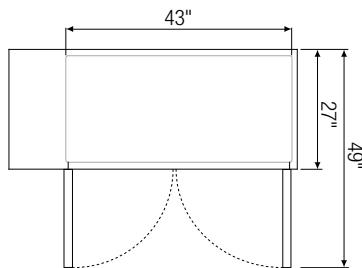
Pre-installed casters



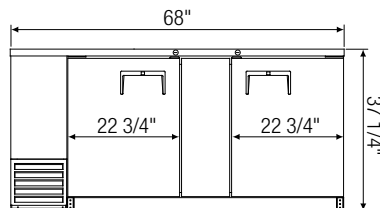
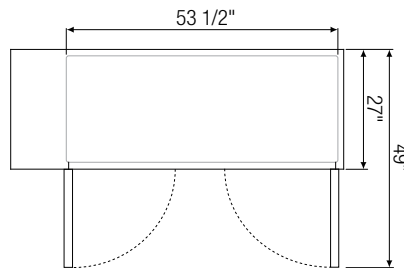
▲ EBB23



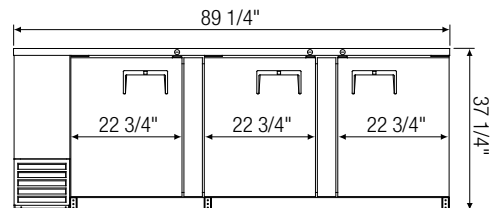
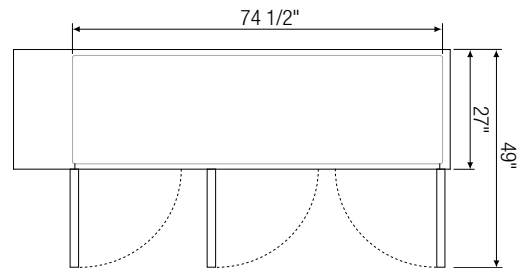
▲ EBB48



▲ EBB59



▲ EBB69



▲ EBB90

| Model | Ref/ Frz/ Dual | # of Doors | # of Shelves | Capacity (Cu.Ft.) | HP | Refrigerant | Capacity | | Power (V-Hz-Ph) | Amps | Crated Weight (LBS) | Exterior Dimensions (Inches) | | |
|-------|----------------------|---------------|-----------------|----------------------|------|-------------|----------------|-------------------|--------------------|------|---------------------------|---------------------------------|---------------------|-----------------|
| | | | | | | | 12 oz. Cans | 12 oz. Bottles | | | | L | D | H |
| EBB23 | Ref | 1 | 2 | 8.26 | 1/5 | R-134A | 220 | 125 | 115-60-1 | 3.90 | 158 | 23 1/2 | 31 1/2 [†] | 39 [*] |
| EBB48 | Ref | 2 | 4 | 14.40 | 1/4+ | R-134A | 490 | 344 | 115-60-1 | 4.20 | 260 | 49 | 27 | 37 1/4 |
| EBB59 | Ref | 2 | 4 | 20.09 | 1/4+ | R-134A | 640 | 408 | 115-60-1 | 4.50 | 297 | 57 3/4 | 27 | 37 1/4 |
| EBB69 | Ref | 2 | 4 | 24.01 | 1/4+ | R-134A | 800 | 504 | 115-60-1 | 4.50 | 329 | 68 | 27 | 37 1/4 |
| EBB90 | Ref | 3 | 6 | 32.37 | 1/3 | R-134A | 1120 | 696 | 115-60-1 | 4.50 | 420 | 89 1/4 | 27 | 37 1/4 |

* : Height includes 5" for casters.

† : Depth includes 1 1/2" for back grill.

Da, Db : Interior Depth Ha, Hb, Hc : Interior Height

Ref = Refrigerator

Specifications subject to change without notice.

Product dimensions are for general purposes and not absolute value. Product capacity(▶) is calculated based on standard industry figures. Slight variations may exist. If dimensions and capacity are critical, please contact Everest Refrigeration.



Please visit our website for updated
Energy Efficiency information.