

BACK BAR COOLER

EBB – Series Model : EBB59



 **Operating temperature range is 32°F ~ 42°F**



Cabinet Construction

Heavy duty stainless steel countertop, textured and laminated black vinyl exterior. Galvanized steel interior wall, and high quality stainless steel floor. 1 3/4" thick high density foamed-in-place polyurethane insulation. Built-in caster thread receptacles.

Refrigeration System

- Side mounted condensing unit
- Oversized condenser and evaporator coils quickly achieve and maintain desired temperature
- Forced-air cooling with oversized evaporator fan motors providing balanced airflow throughout cabinet to ensure faster temperature drop
- Removable side panel and slide-out condensing unit for convenient repair and maintenance
- Environmentally friendly CFC free R-134A refrigerant
- Air defrost controlled by electrical timer
- Copper tube and aluminum fin evaporator with anti-corrosive coating
- Energy efficient condensate drain pan assembly heated by high side copper tube
- Pre-wired and ready to plug, 115V/60Hz/1Ph, NEMA 5-15P

Doors

- Textured and laminated black exterior with galvanized steel interior
- 1 3/4" thick high density foamed-in-place polyurethane insulation
- One piece snap-in magnetic door gaskets for easy replacement
- Heavy duty recessed door handles for a flat surface
- Door locks

Lighting

- Shielded vertical LED interior lighting with on/off switch for energy saving, less heat generation and enhanced illumination (available from 2015 models)

Shelving

- Two epoxy coated wire shelves per section
- Stainless steel pilasters and shelf clips

Temperature Control

- Factory preset temperature, 35°F
- Temperature setting range from 32°F to 42°F
- Easy to set analog thermostat

Option

- 2 1/2" and 4" diameter casters (3 1/2" and 5" overall height)

Model	# of Doors	Capacity (Cu. Ft.)	HP	Refrigerant	# of Shelves	Capacity 20 oz. Cans / Bottles	Power (V-Hz-Ph)	Amps	Crated Weight	Exterior Dimensions		
										L	D	H
EBB59	2	20.09	1/4+	R-134A	4	640 / 408	115-60-1	4.50	297lbs (134.7kg)	57 3/4" (596 mm)	27" (685 mm)	37 1/4" (946 mm)

Specifications subject to change without notice.

Product dimensions are for general purposes and not absolute value. Product capacity (▶) is calculated based on standard industry figures. Slight variations may exist. If dimensions and capacity are critical, please contact Everest Refrigeration.

BACK BAR COOLER

EBB – Series Model : EBB59



DIMENSIONAL DATA

Net capacity cu. ft.		20.09 (568.9 cu l)
Exterior (mm)	Length Overall in.	57 3/4" (1466)
	Depth Overall in.*	27" (685)
	Height Overall in.	37 1/4" (946)
Crated Weight		297lbs (134.7kg)
# of Doors		2
# of Shelves		4
Capacity 20oz. (Cans / Bottles)		640 / 408
Shelf Size Length x Depth in. (mm)		22 7/8" x 20 7/8" (580 x 530) 20 7/8" x 20 7/8" (530 x 530)
ELECTRICAL DATA		
Voltage (V-Hz-Ph)		115-60-1
Full load amperes		4.50
Feed wires with Ground		3
Cord Length ft.		9
REFRIGERATION DATA		
Refrigerant		R-134A
Compressor H.P.		1/4+ HP
BTU/HR ^a (Kcal/h)		2075 (523)

Specifications subject to change without notice.

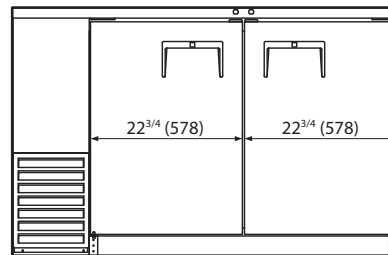
* : Exterior depth dimension does not include 1 1/2" for door handle.

^a : Based on evaporating temperature of 23°F(-5°C) & Condensing temperature of 131°F(55°C).

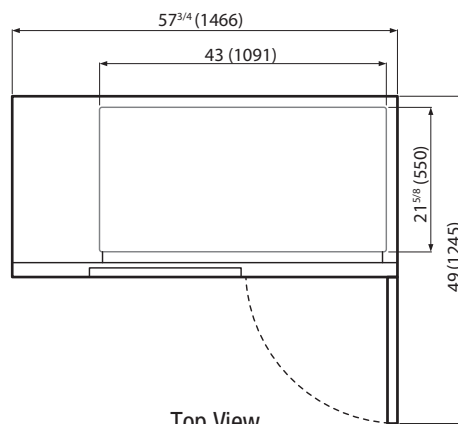


Equipped with one NEMA 5-15P plug.

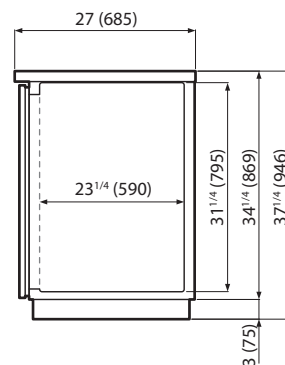
Dimensions inches (mm)



Front View



Top View



Side View