



# BEVERAGE-AIR

|                 |            |
|-----------------|------------|
| Project: _____  | AIA# _____ |
| Item: _____     |            |
| Location: _____ | SIS# _____ |
| Approved: _____ |            |

## SPE FOOD PREPERATION TABLES

SPE27HC Elite Series Sandwich Prep  
Hydrocarbon Series

**MODELS:**  
**SPE27HC**



**SPE27HC**

**3 Year Parts/Labor Warranty**  
**Additional 2 Year Compressor Warranty**

### CABINET CONSTRUCTION

- Stainless steel front, sides, top, door, and grille (galvanized back & bottom)
- Interior liner is made of corrosion resistant aluminum
- Full electronic control
- Removable hoods and insulated lid assemblies are made of matching stainless steel
- Airflow assures that product in open containers is kept below 41°F and above freezing
- Self-closing doors with 120° Stay-open feature, on cartridge style hinges
- Easy door removal for service and cleaning
- Field-reversible doors with snap-in door gaskets
- Painted aluminum door handle
- 6" Casters, 2 with brakes standard
- 10" Wide cutting board constructed of white polyethylene plastic
- Cutting board removable for cleaning
- Two (2) epoxy-coated steel wire shelves standard
- Six (6) 1/6 4" deep pans constructed of polycarbonate plastic
- Two (2) 1/9 4" deep pans constructed of polycarbonate plastic
- Enhanced airflow maintains temperature between 36° to 38°F

### OPTIONS & ACCESSORIES

- ☐ Stainless steel back option available
- ☐ Stainless steel interior option available
- ☐ Remote option
- ☐ Overshelves (single or double)
- ☐ Sneeze guard option
- ☐ Drawers models
- ☐ Side and front crumb catcher
- ☐ 6" legs or 3" casters available
- ☐ Low profile casters
- ☐ Richlite & composite cutting board
- ☐ Night cover
- ☐ Dressing holder
- ☐ Shelf dividers

### REFRIGERATION SYSTEM

- Refrigeration system uses R290 refrigerant to comply with all environmental concerns
- Recirculated, forced air from evaporator is moved under pans, which are recessed 2" from top of cabinet
- Automatic condensate evaporator is provided to eliminate the need of floor drains

**SPE27HC Elite Series Sandwich Prep: Standard Top Series**

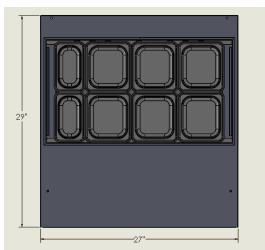


3779 Champion Blvd., Winston-Salem, NC 27105  
1-888-845-9800 Fax: 1-336-245-6453  
Beverage-Air.com sales@bevair.com



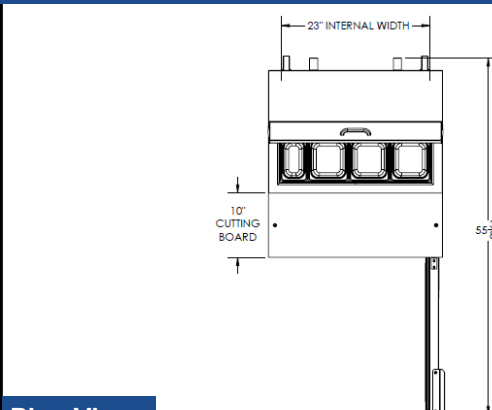
# BEVERAGE-AIR

| MODEL                              | SPE27HC                          |
|------------------------------------|----------------------------------|
| <b>EXTERNAL DIMENSIONAL DATA</b>   |                                  |
| Width Overall                      | 27"                              |
| Depth Overall with Bumper          | 31"                              |
| Height Overall with 6" Casters     | 45 3/8"                          |
| Number of Doors                    | 1                                |
| Depth with Door Open 90 ° Extended | 55 3/8"                          |
| Solid Door Opening (inches)        | 22 5/8" x 21 5/8"                |
| Depth, Cutting Board               | 10"                              |
| Shelf Area (sq. in.)               | Upper 389 3/8"<br>Lower 322 5/8" |
| <b>INTERNAL DIMENSIONAL DATA</b>   |                                  |
| NET Capacity (cubic ft.)           | 4.8                              |
| Internal Width Overall (in)        | 23"                              |
| Internal Depth Overall (in)        | 23 1/2"                          |
| Internal Depth Useable (in)        | Upper 18 1/2"<br>Lower 15 1/2"   |
| Internal Height Overall (in)       | 23"                              |
| Internal Height Useable (in)       | 17 5/8"                          |
| Number of Shelves                  | 2                                |
| Number of Pans                     | (6) 1/6 size &<br>(2) 1/9 size   |
| <b>ELECTRICAL DATA</b>             |                                  |
| Full Load Amperes 115/60/1         | 2                                |
| <b>REFRIGERATION DATA</b>          |                                  |
| Horsepower                         | 1/6                              |
| Capacity (BTU/Hr)*                 | 1140                             |
| <b>WEIGHT DATA</b>                 |                                  |
| Gross Weight (Crated lbs)          | 202 lbs                          |
| Height - Crated                    | 46"                              |
| Width - Crated                     | 30"                              |
| Depth - Crated                     | 33"                              |

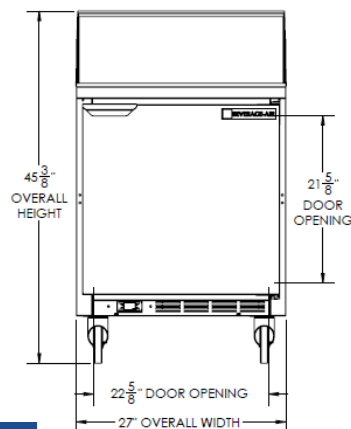


## Food Preparation Table — Standard Top Models: SPE27HC

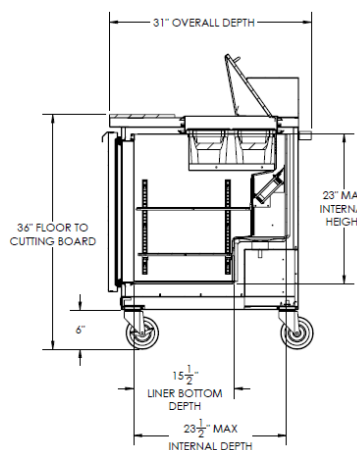
### Model Views



### Plan View



### Elevation View



### Side View

## ELECTRICAL CONNECTION



115/60/1  
NEMA-5-15P

Units pre-wired at  
factory and include 8'  
long cord and plug set.



an Ali Group Company



The Spirit of Excellence

3779 Champion Blvd., Winston-Salem, NC 27105  
1-888-845-9800 Fax: 1-336-245-6453  
Beverage-Air.com sales@bevair.com